

SECURELINK REMOTE CONNECTIVITY SOLUTION

- Complete customer control over network access
- Faster, more secure support
- Less effort and infrastructure

Thomson Elite recognizes the security demands you face. We are committed to providing secure, top-quality and efficient support that is client-controlled and in compliance with applicable security regulations.

Before SecureLink™, only a patchwork of options existed to facilitate remote support access – all with drawbacks. All of these methods, including dialing into a modem, opening a hole in your firewall, or extending your VPN were designed for a different purpose. Enexity's SecureLink, including the SecureLink Gatekeeper, is a better solution.

WHY SECURELINK?

More Secure

The SecureLink Gatekeeper, the component of SecureLink installed on the end-user side, gives you total control over our remote access. You choose who can connect, when they can connect and what hosts and services that they have access to upon connecting. A detailed audit trail is available after every session. SecureLink also allows you to choose from multiple encryption strengths.

More Effective

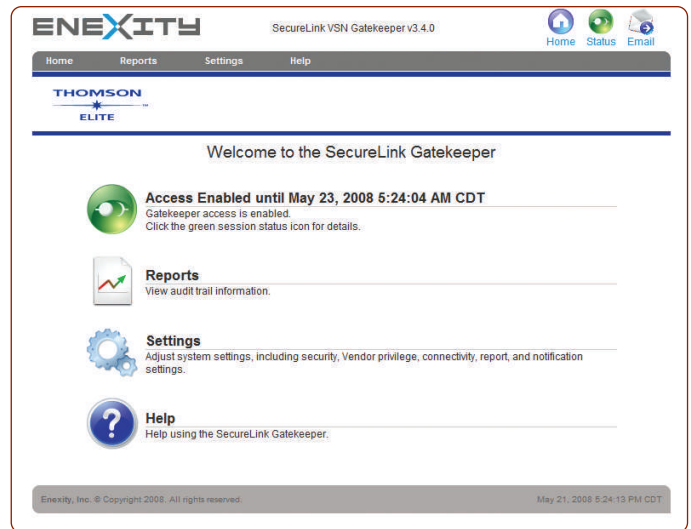
SecureLink allows powerful connectivity, such as querying back-end databases or viewing log files in real time, while still enabling more basic tools, such as file transfer and desktop sharing. SecureLink provides the power needed to support you while reducing the burden on your IT staff.

Easy To Use

The SecureLink Gatekeeper requires a one-time download of a small (10MB) component, provided at no cost to you, to a single server. The user interface is intuitive and easy to navigate.

SECURELINK FEATURE HIGHLIGHTS

- **Gatekeeper access control** – You control when Elite connects to your network, how long we can connect for, what we have access to upon connecting, and even what credentials we log in with.
- **Encryption strength** – SecureLink offers many encryption options, including AES, Blowfish and 3DES, allowing you to determine the best method for your operation.



SecureLink is the only product specifically designed to enable secure, remote service and support to server-based software.

- **Audit trail** – The activity log lets you know exactly who has been on your system and what they did. With most VPNs, you only get a generic vendor name.
- **Quick connections** – The one-click step eliminates the hassle of helping customer support reps access your network, leading to speedier resolution times.
- **Real-time notifications** – Know exactly when Elite connects and monitor the session.
- **Advanced end-user configurability** – Grant access as narrowly or broadly as appropriate. You can limit access to specific hosts, IP addresses, ports, services or even read-only access to a single log file directory.
- **Customer initiation** – You control the connection by issuing an invitation or allowing anytime-access.
- **Optional desktop sharing** – SecureLink provides the option of desktop sharing but allows you to disable it if appropriate.
- **RDP credential storage** – All network credentials are stored on Gatekeeper and automatically entered in an encrypted manner during login. This storage feature eliminates security worries about user names and passwords stored offsite.

continued on back ...

SECURELINK REMOTE CONNECTIVITY SOLUTION



	SecureLink	VPNs	Screen Sharing	Remote Control Software
Secure				
Dual auditability	●	○	○	○
Customer configurable	●	◐	◐	○
End-to-end control of the solution	●	◐	○	●
Real-time monitoring	●	◐	◐	◐
Historical audit reporting	●	●	○	○
Customer-initiated authentication	●	○	◐	◐
Encryption	●	●	●	●
Effective				
Server-specific solution	●	◐	○	○
Ability to use any tool	●	○	○	○
Platform independent	●	●	○	○
Decreased IT involvement	●	○	●	○
Retain control of desktop	●	◐	○	○
Ricochet	●	○	○	○
Better service levels	●	◐	◐	◐

● Excellent ◐ Good ◑ Fair ○ Not Available

SecureLink is provided by Enexity, an Austin-based provider of secure virtual support networks. The trademarks used herein are trademarks of their respective owners.

To learn more about SecureLink, the SecureLink Gatekeeper or Enexity, please contact your account manager or call **323-642-5200**.